

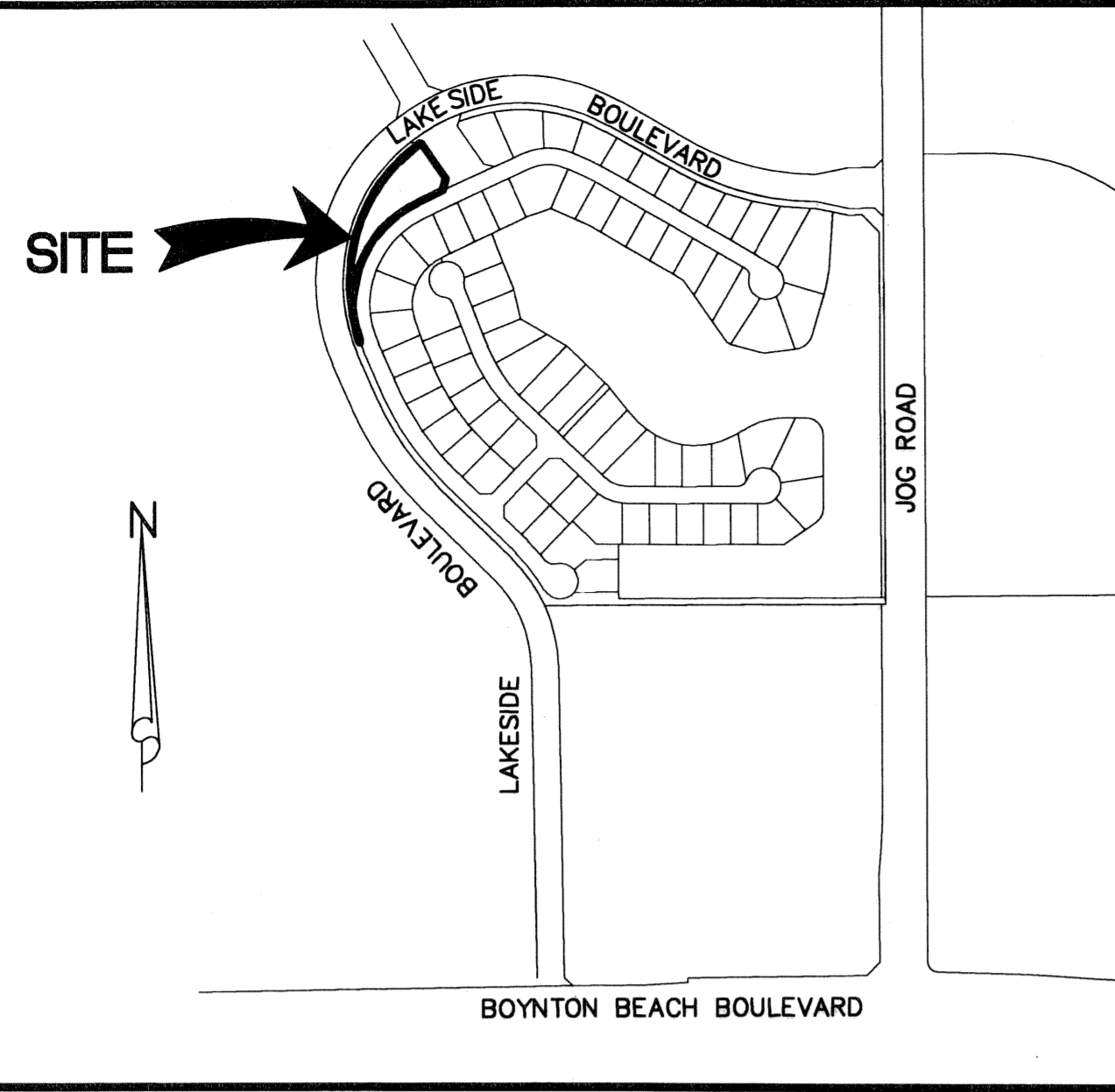
0391-018

# ENCLAVE AT BOYNTON WATERS - REPLAT NO. 2

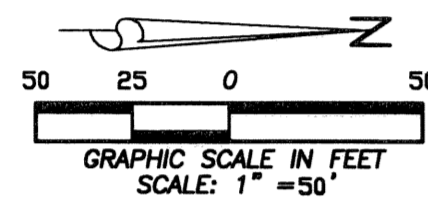
AT LAKES OF BOYNTON BEACH P.U.D., POD B  
SITUATE IN SECTION 22, TOWNSHIP 45 SOUTH, RANGE 42 EAST, PALM BEACH COUNTY, FLORIDA  
BEING A REPLAT OF TRACT "F", OF ENCLAVE AT BOYNTON WATERS, AS RECORDED IN PLAT  
BOOK 99, PAGES 105 THROUGH 109, INCLUSIVE, OF THE PUBLIC RECORDS OF PALM BEACH COUNTY, FLORIDA  
AUGUST, 2005 SHEET 2 OF 2

92

STATE OF FLORIDA  
COUNTY OF PALM BEACH  
THIS PLAT WAS FILED FOR  
RECORD AT \_\_\_\_\_  
THIS \_\_\_\_\_ DAY OF \_\_\_\_\_  
A.D. 2005 AND DULY RECORDED  
IN PLAT BOOK \_\_\_\_\_ ON  
PAGES \_\_\_\_\_ THROUGH \_\_\_\_\_  
SHARON R. BOCK, CLERK  
AND COMPTROLLER  
BY: \_\_\_\_\_  
DEPUTY CLERK

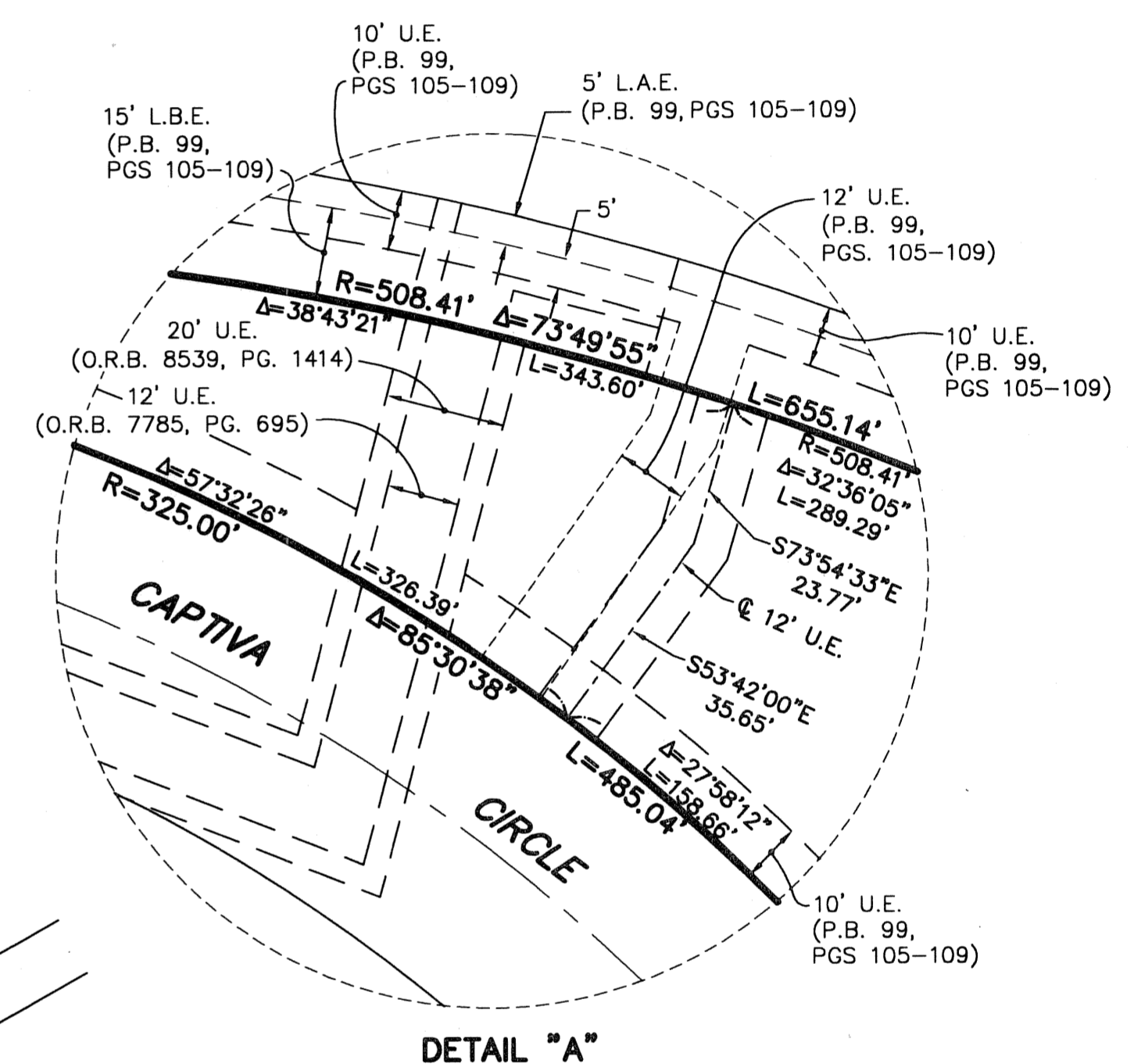
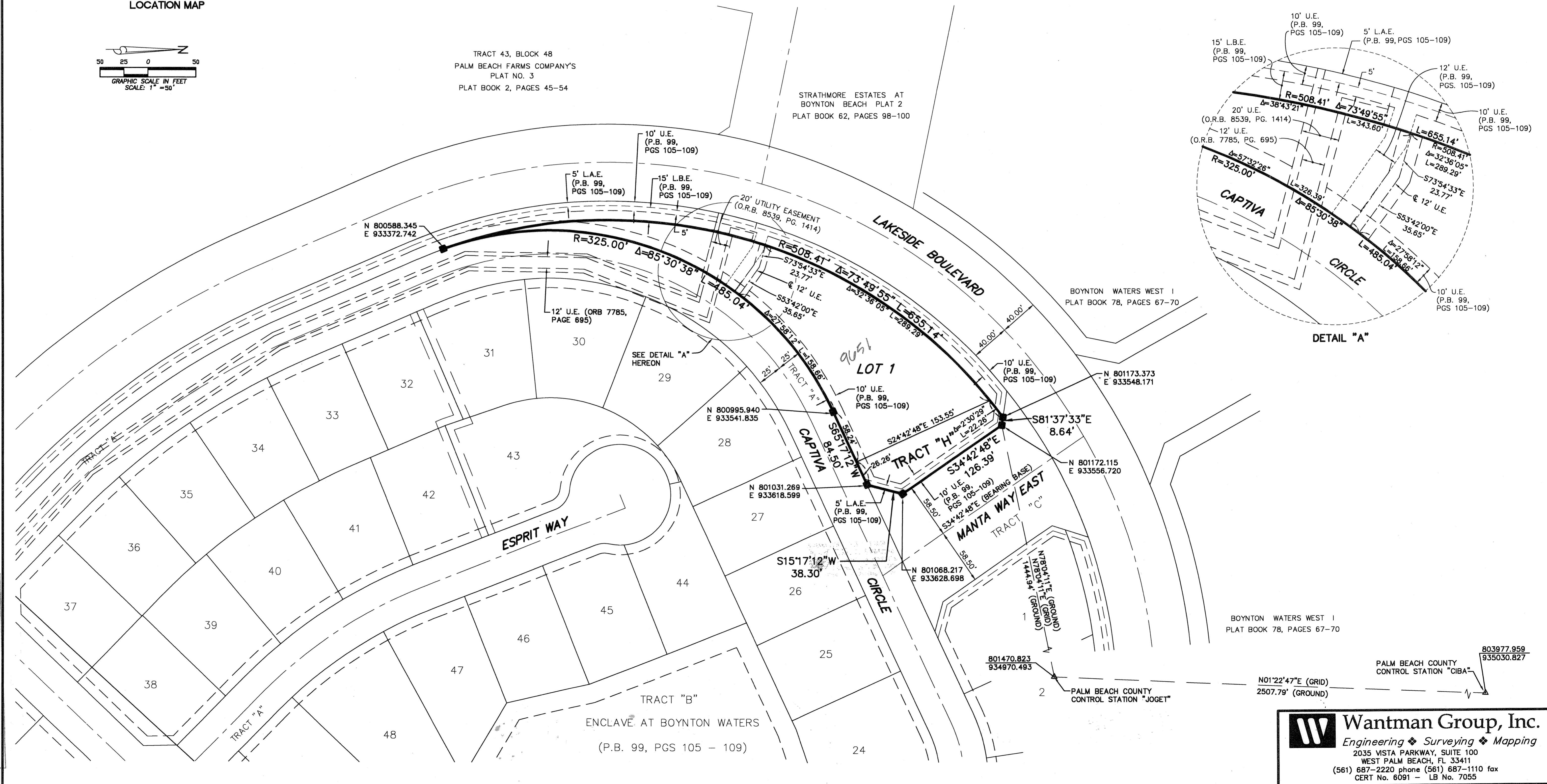


LOCATION MAP



### LEGEND

- D. E. = DRAINAGE EASEMENT
- R = RADIUS
- Δ = CENTRAL ANGLE/Delta
- L.A.E. = LIMITED ACCESS EASEMENT
- L = ARC LENGTH
- L.B.E. = LANDSCAPE BUFFER EASEMENT
- O.R.B. = OFFICIAL RECORDS BOOK
- P.B. = PLAT BOOK
- PGS. = PAGES
- U.E. = UTILITY EASEMENT
- = PERMANENT REFERENCE MONUMENT (PRM)  
SET PRM LB 7055



SUBDIVISION ENCLAVE AT BOYNTON WATERS - REPLAT 2  
BOOK 106 PAGE 92  
FLOOD MAP # 185 A  
ZONING R.S.  
QUAD # 35  
SE  
TAZ 442  
PUD NAME LAKES OF BOYNTON BEACH

**Wantman Group, Inc.**  
Engineering ♦ Surveying ♦ Mapping  
2035 VISTA PARKWAY, SUITE 100  
WEST PALM BEACH, FL 33411  
(561) 687-2220 phone (561) 687-1110 fax  
CERT No. 6091 - LB No. 7055

803977.959  
935030.827  
PALM BEACH COUNTY CONTROL STATION "CIBA"

N01°22'47"E (GRID)  
2507.79' (GROUND)

PALM BEACH COUNTY CONTROL STATION "JOGET"

801470.823  
934970.493

N 801068.217  
E 933628.698

5' L.A.E.  
(P.B. 99,  
PGS 105-109)

N 801031.269  
E 933618.599

N 800995.940  
E 933541.835

SEE DETAIL "A"  
HEREON

12' U.E. (ORB 7785,  
PAGE 695)

15' L.B.E.  
(P.B. 99,  
PGS 105-109)

10' U.E.  
(P.B. 99,  
PGS 105-109)

STRATHMORE ESTATES AT  
BOYNTON BEACH PLAT 2  
PLAT BOOK 62, PAGES 98-100

TRACT 43, BLOCK 48  
PALM BEACH FARMS COMPANY'S  
PLAT NO. 3  
PLAT BOOK 2, PAGES 45-54

BOYNTON WATERS WEST I  
PLAT BOOK 78, PAGES 67-70

BOYNTON WATERS WEST I  
PLAT BOOK 78, PAGES 67-70